



GAT MONTHLY MEMBERSHIP PROGRESS REPORT

Results as of: 4/30/2026

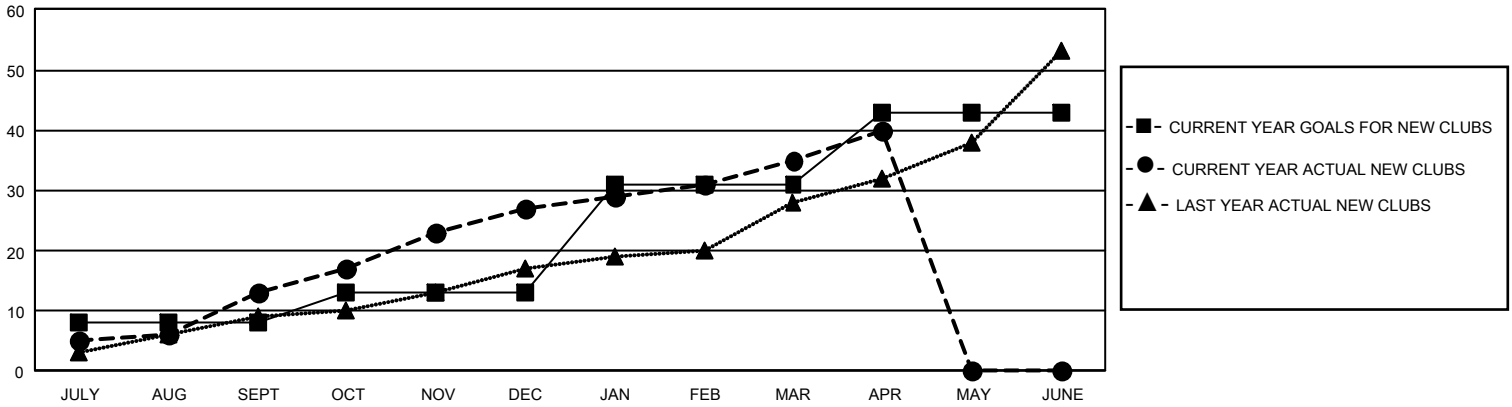
GMT Constitutional Area 3, Group B

REPORT DOES NOT INCLUDE CLUBS IN UNDISTRICTED AREAS.

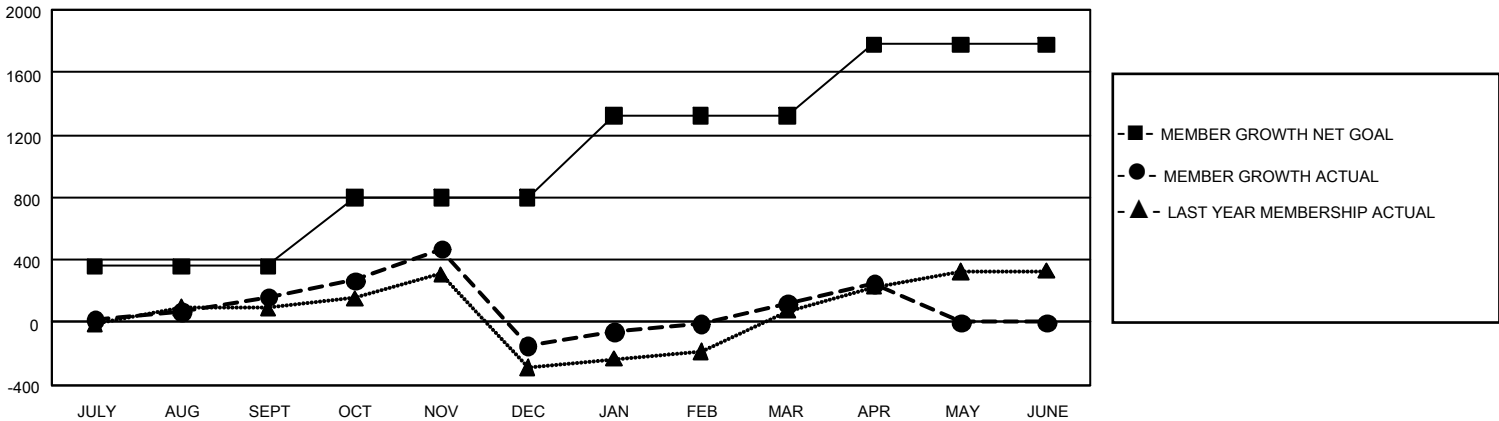
Clubs			
RESULTS FOR 2025-2026			
QUARTER	NEW CLUB GOAL	NEW CLUBS	DROPPED CLUBS
JULY/AUG/SEPT	24	13	10
OCT/NOV/DEC	15	14	15
JAN/FEB/MAR	54	8	3
APR/MAY/JUNE	36	5	0

Members			
RESULTS FOR 2025-2026			
QUARTER	MEMBER GROWTH NET GOAL	MEMBER GROWTH ACTUAL	DROPPED MEMBERS ACTUAL (including transfers)
JULY/AUG/SEPT	360	877	658
OCT/NOV/DEC	441	930	1,170
JAN/FEB/MAR	521	704	358
APR/MAY/JUNE	456	336	169

GOALS AND ACTUAL NEW CLUBS CUMULATIVE



GOALS AND ACTUAL MEMBERS CUMULATIVE



DROPPED CLUBS: 28	468 CLUBS OF 1,007 ADDED 1 OR MORE NEW MEMBERS	<u>GENDER DISTRIBUTION</u>	
		MALE	10,926 (40.74%)
<u>DROPPED MEMBERS</u>		FEMALE	15,885 (59.23%)
DECEASED	109	NON BINARY	1 (0.00%)
CLUB CANCELLED	254	PREFER NOT TO ANSWER	5 (0.02%)
OTHER	1,982	TOTAL FAMILY UNIT MEMBERS	5,499
TOTAL	2,345	FAMILY MEMBERS PAYING HALF DUES	3,164

[CLICK HERE FOR CUMULATIVE MEMBERSHIP DATA](#)